



**7, Whitecroft Road, Reabrook, Shrewsbury, SY3 7TJ**  
£950 Per Month





7, Whitecroft Road, Reabrook, Shrewsbury, SY3 7TJ

**£950 Per Month**

VIRTUAL TOUR AVAILABLE - Refurbished spacious three double bedroom semi detached house in a popular residential area close to local amenities and providing excellent access to local road links.

Available: 23/12/2025

## Description

Comprising: Entrance lobby, living room, modern kitchen including oven & gas hob, dishwasher, dining area, conservatory, utility including door to rear and spaces for washing machine, dryer and large fridge/freezer, cloakroom including WC. Stairs to first floor landing, modern family bathroom including shower, two double bedrooms, stairs to second floor double bedroom including ensuite WC. Large single garage and driveway parking. Front and rear garden. Gas central heating, double glazing. EPC D



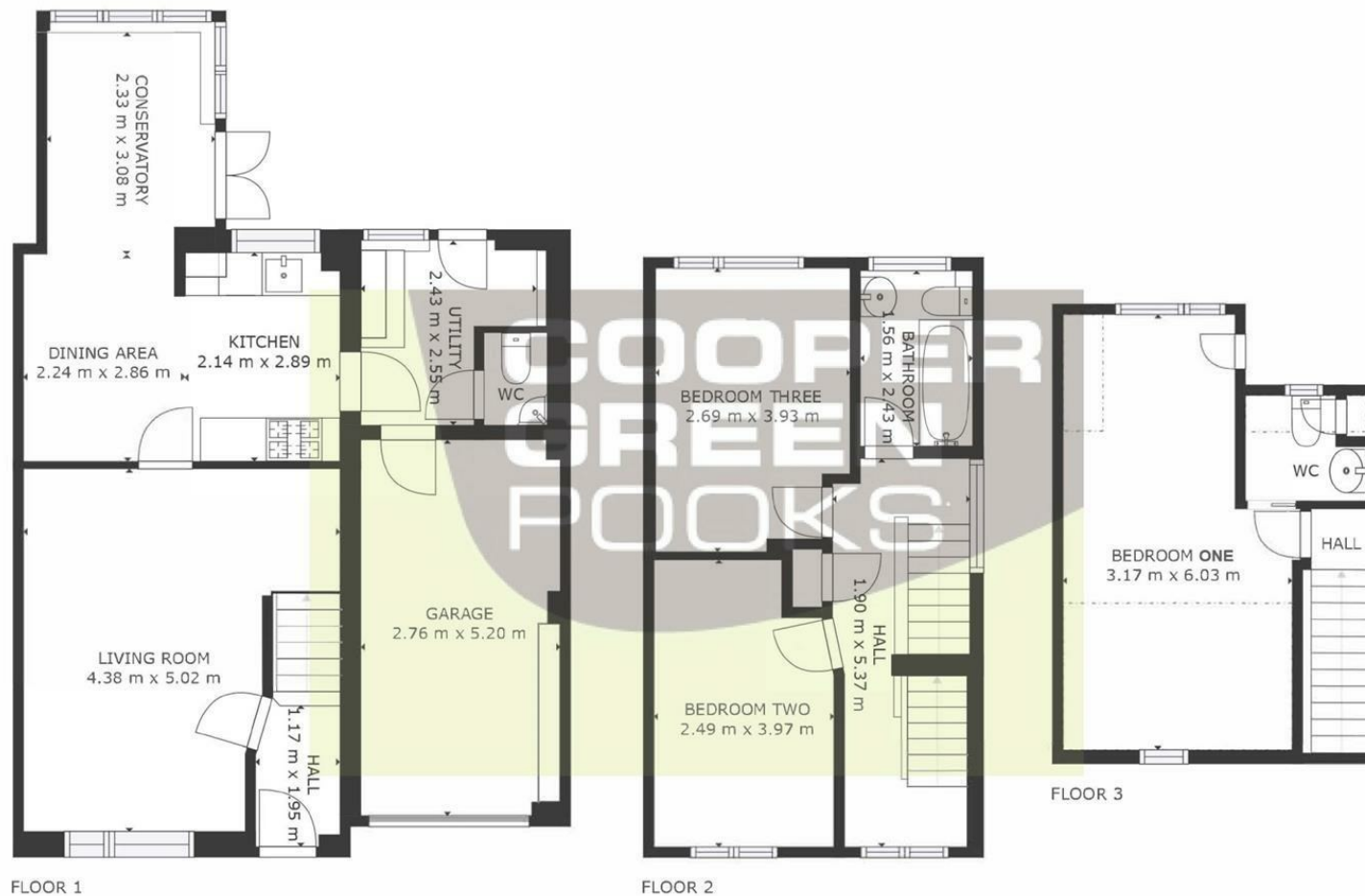
Unfurnished

Council Tax Band: C

Available: 23rd December 2025

EPC: D

## Floor Plans



GROSS INTERNAL AREA  
 FLOOR 1: 50 m<sup>2</sup>, FLOOR 2: 35 m<sup>2</sup>  
 FLOOR 3: 16 m<sup>2</sup>, EXCLUDED AREAS:  
 GARAGE: 14 m<sup>2</sup>, REDUCED HEADROOM BELOW 1.5M: 8 m<sup>2</sup>  
 TOTAL: 101 m<sup>2</sup>  
 SIZES AND DIMENSIONS ARE APPROXIMATE, ACTUAL MAY VARY.



These particulars, whilst believed to be accurate are set out as a general outline only for guidance and do not constitute any part of an offer or contract. Intending purchasers should not rely on them as statements of representation of fact, but must satisfy themselves by inspection or otherwise as to their accuracy. No person in this firm's employment has the authority to make or give any representation or warranty in respect of the property.